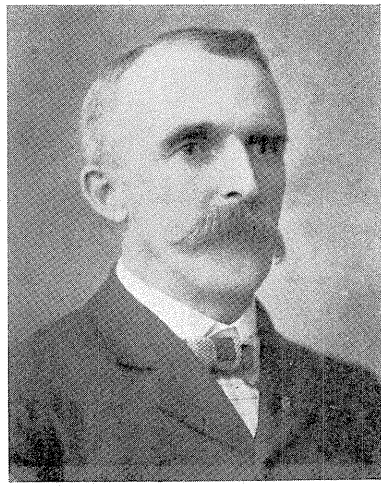


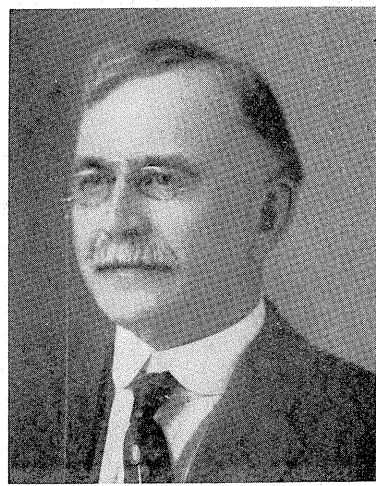
ILLUSTRATIONS



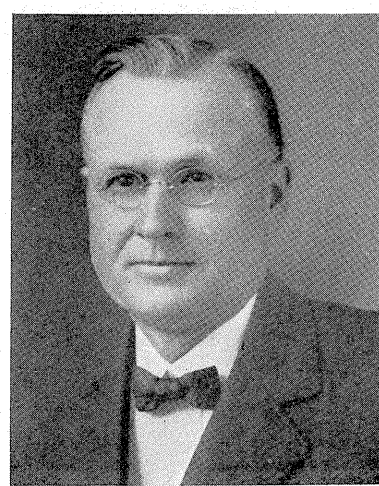
J. T. S. REED,
Executive Head of the Farmers
State Bank, Active and Well-
Known Personality in City and
County Affairs,
LINDSBORG, KANSAS.



T. E. HOPKINS,
108 S. Main Street,
MCPHERSON, KANSAS.



C. VANIMAN,
Cashier of People's State Bank,
MCPHERSON, KANSAS.



F. A. VANIMAN,
President of People's State Bank,
MCPHERSON, KANSAS.



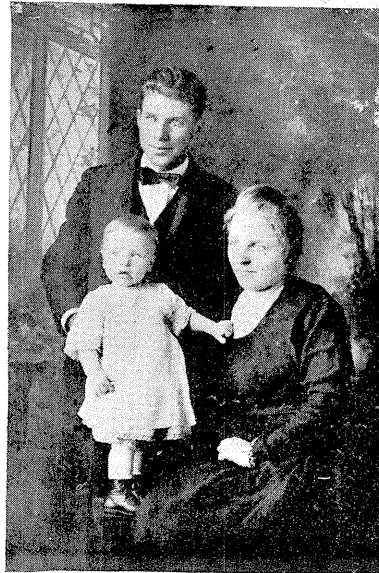
JACOB C. KREHBIEL,
MOUNDRIDGE, KANSAS.



N. F. ANDERSON,
CONWAY, KANSAS.



WM. M. GARRELTS,
Farmer and Stockraiser,
MCPHERSON, KANSAS.



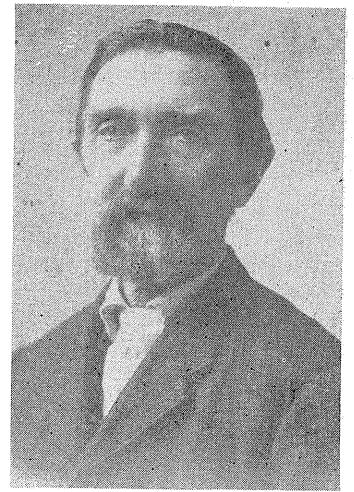
MR. AND MRS. E. G. ANDER-
SON AND SON VIRGIL,
MARQUETTE, KANSAS.



DIXON BROTHERS,
R. F. D. No. 1,
MCPHERSON, KANSAS.



J. E. HORNER,
WINDOM, KANSAS.



B. F. DOLE,
CANTON, KANSAS.



S. P. JOHNSON AND FAMILY.
Mr. Johnson is one of the pioneers
in McPherson County, having
homesteaded the northeast quar-
ter of Section 8, Township 19,
Range 2, in 1873. Photo from
Emil Johnson.



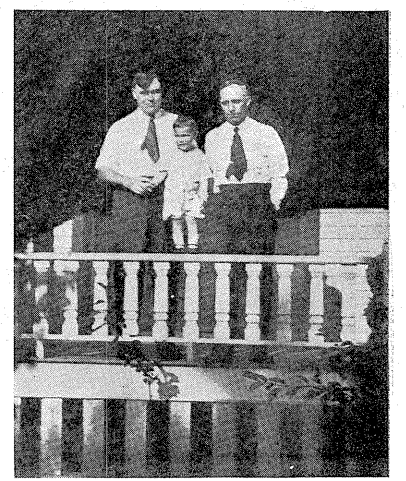
E. M. NELSON,
Proprietor of Longview Farm,
and his Nephew,
LINDSBORG, KANSAS.



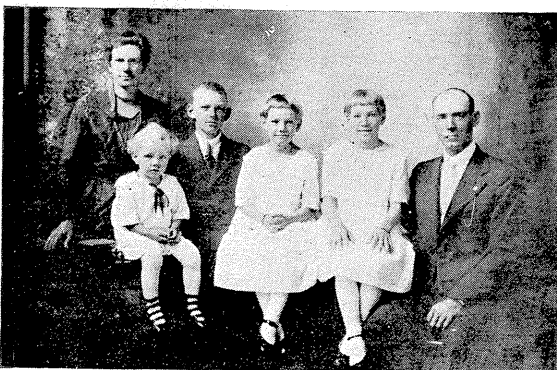
MR. AND MRS. DAVID MILLS,
R. F. D. No. 1,
CONWAY, KANSAS.



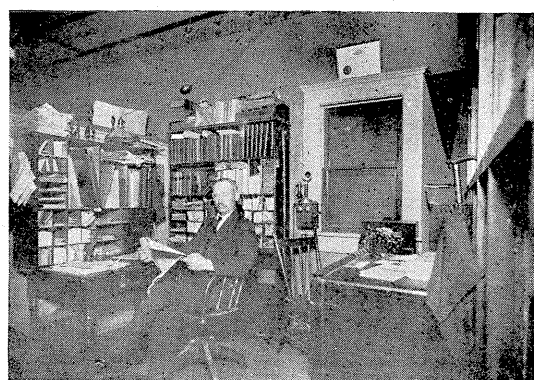
FAMILY GROUP,
Photo from John C. Swenson,
R. F. D. No. 3,
LINDSBORG, KANSAS.



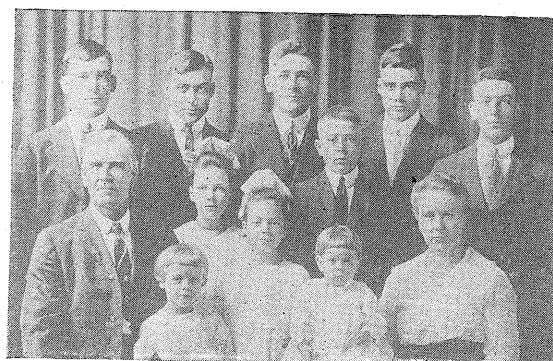
PHOTOGRAPH FROM
W. W. MUSICK,
CANTON, KANSAS.



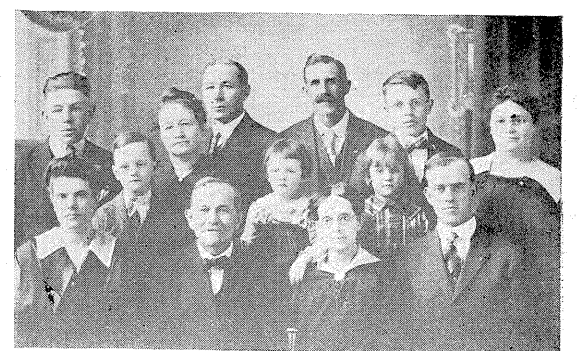
L. E. LUNDSTROM AND FAMILY,
LINDSBORG, KANSAS.



H. E. BRUCE,
Editor Marquette Tribune,
MARQUETTE, KANSAS.



JOHN OSTLIND, JR. AND FAMILY,
MCPHERSON, KANSAS.



FAMILY GROUP,
Photo from E. P. McGill,
CANTON, KANSAS.