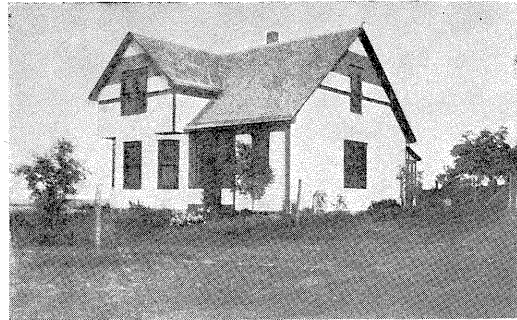


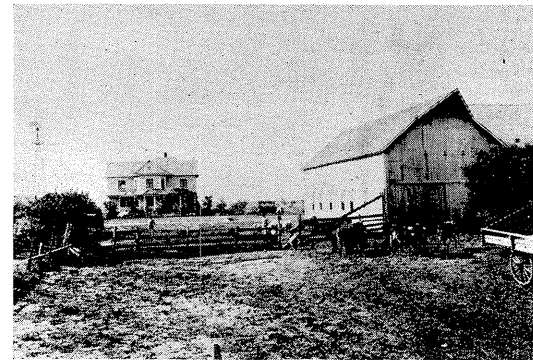
ILLUSTRATIONS



RESIDENCE AND FARM BUILDINGS OF
C. B. GRIFFITH,
CANTON, KANSAS.



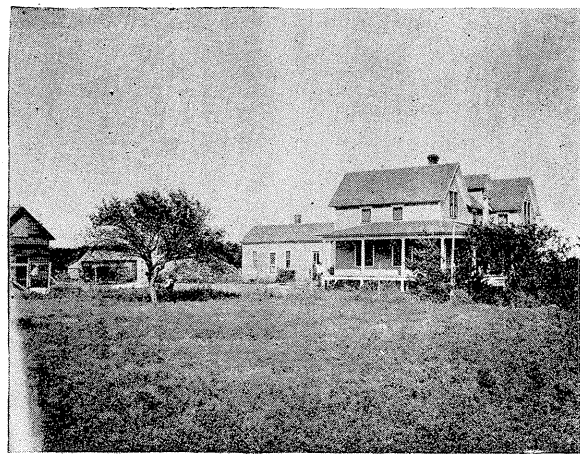
RESIDENCE OF F. C. ANDERSON,
R. F. D. No. 1,
ROXBURY, KANSAS.



VIEW ON THE FARM OF B. A. FLICKNER,
R. F. D. No. 1,
MOUNDRIDGE, KANSAS.



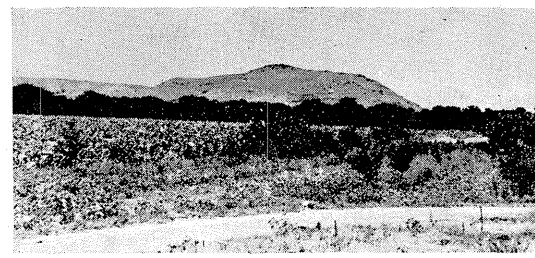
SHADY LAWN FARM,
P. H. Schroeder, Proprietor,
CANTON, KANSAS.



RESIDENCE OF JACOB N. KAUFMAN,
MOUNDRIDGE, KANSAS.



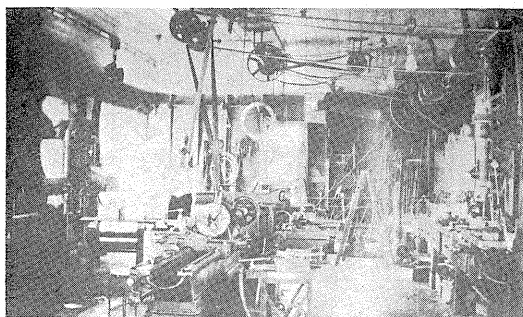
HOME OF A. A. JENNINGS,
McPHERSON, KANSAS.



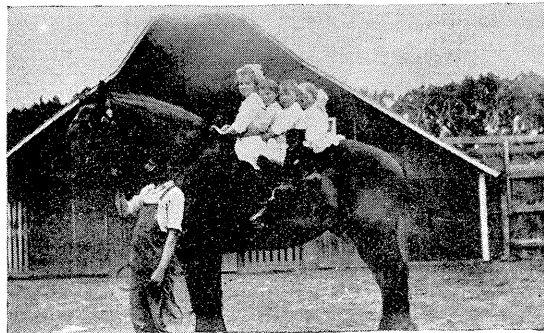
VIEW OF TWIN MOUNTAINS, FROM THE
HOME OF F. H. TARNSTROM,
ROXBURY, KANSAS.
This is one of the highest points in McPherson county, and was used by the Indians as a camping place before the country was settled. This is an ideal place for picnics and camping parties.



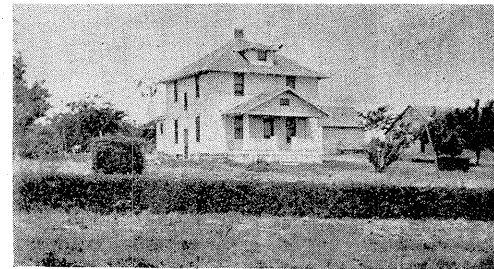
HOME OF HOMER SPENCE,
McPHERSON, KANSAS.



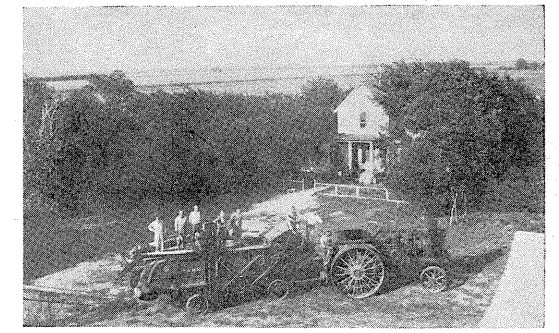
INTERIOR VIEW OF HENRY LUNG-
STROM'S MACHINE SHOP,
LINDSBORG, KANSAS.



CHILDREN OF W. E. TOLAND,
Taking a Joy Ride on the Imported Stallion, Glacis,
GALVA, KANSAS.



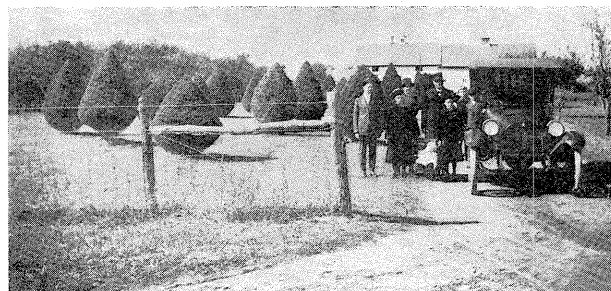
RESIDENCE OF S. C. WEAVER,
McPHERSON, KANSAS.



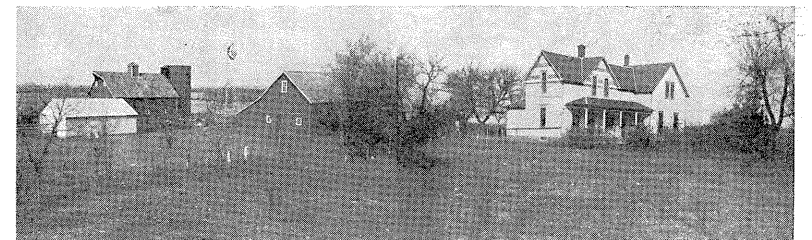
PHOTOGRAPH FROM J. F. REGIER,
MOUNDRIDGE, KANSAS.



SCENE ON FARM OF GEORGE MILLS,
INMAN, KANSAS.



HOME OF JACOB H. SCHROEDER AND FAMILY,
R. F. D. No. 2,
CANTON, KANSAS.



FARM BUILDINGS OF JOHN NELSON,
R. F. D. No. 1,
McPHERSON, KANSAS.

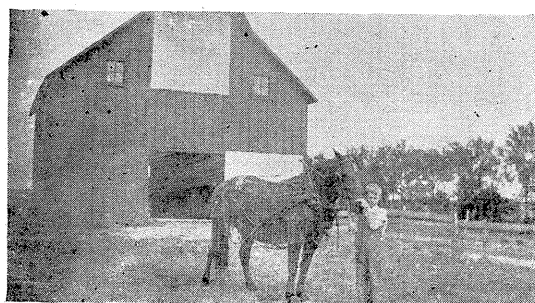


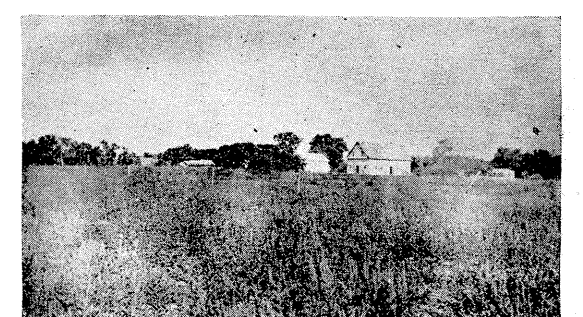
PHOTO FROM EMIL L. JOHNSON,
R. F. D. No. 3,
McPHERSON, KANSAS.



BARN OF F. H. WITTORFF,
R. F. D. No. 2, Inman, Kansas, showing a
corner where part of the world's meat
supply comes from.



TWO PINE RANCH,
E. W. Rupp, Proprietor, R. F. D. No. 2,
MOUNDRIDGE, KANSAS.



FARM OF KORNELIUS WILLEMS,
R. F. D. No. 4,
INMAN, KANSAS.